

**LA County is committed to a safe, clean, reliable water future.** Through hundreds of local-scale stormwater projects across the county, we are making a big impact towards safe, clean reliable water resources. We are transforming parking lots, underutilized open space, parks, schools, roads and sidewalks into multi-benefit projects that can clean and capture stormwater runoff while improving water quality and creating more green space for our communities.

The County also aims to add 600,000 acre-feet of water to our local water supply over the next 20 years, and half of that will be from stormwater. *Communities all over LA County are helping us achieve these goals as they become home to these important projects.*

## Spotlight on Viewridge Road Stormwater Improvements Project

The Viewridge Road Stormwater Improvements Project will help clean the rainwater that runs off into storm drains, protecting Topanga Canyon Creek and Santa Monica Bay. The project will direct runoff into a system that cleans the water before releasing it. It will also feature landscaping, eco-friendly design elements and educational information for visitors.

### Benefits



**Clean Water:** Keeps local streams and oceans clean and healthy by filtering out bacteria, trash, metals, sediment and other pollutants from stormwater runoff.



**Greener Neighborhoods:** Promotes sustainable urban greening through the replacement of paved areas with new trees, drought-tolerant landscaping and drip irrigation.

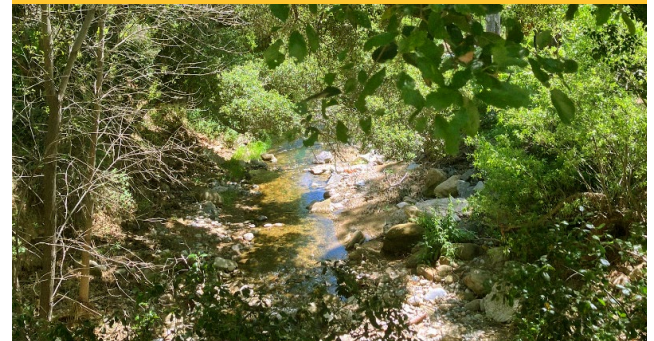


**The Community & Need:** Viewridge is a high priority because it represents the largest developed area at the top of the Topanga Watershed. Water quality samples have confirmed the presence of pollutants, and this project will help reduce those pollutants.

### Did you know?

Everyday actions like driving, mowing the lawn, washing cars and leaving behind pet waste create pollution that many people don't realize. These pollutants build up on hard surfaces like sidewalks, streets and front yards. When it rains or when water runs off from overwatering, these pollutants are carried through storm drains and introduced into our waterways, eventually reaching the ocean.

**County monitoring efforts have found traces of toxic environmental pollutants, like PCB and DDT, in locations throughout the County, including Viewridge.**

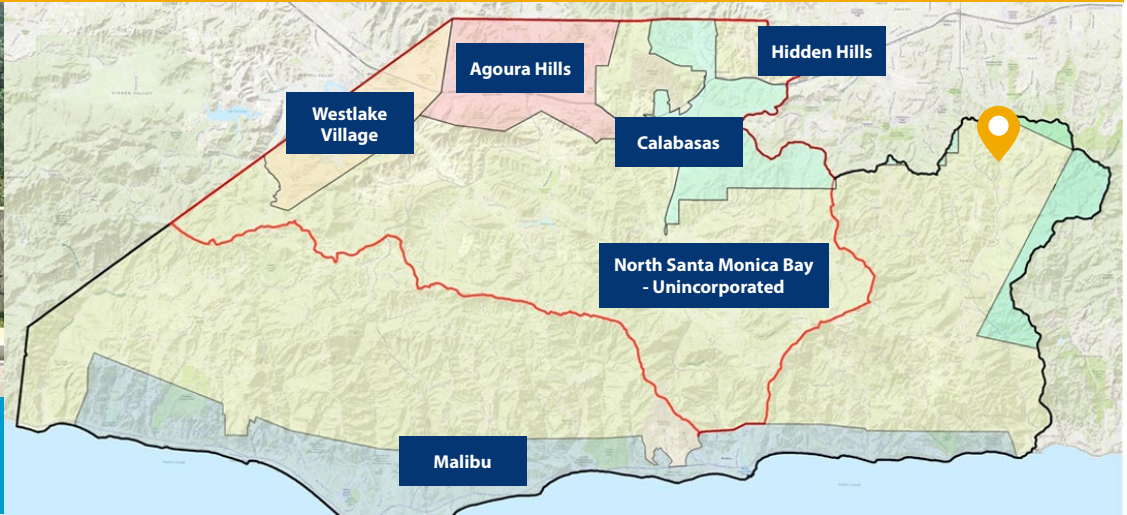


\*Conceptual Rendering, subject to change

Aboveground improvements will consist of a new raised median that will replace the existing painted median. The new, raised median will include drought tolerant landscaping and trees within each of the three 200-foot long islands with breaks in between for emergency access.

Underground water quality treatment units will clean stormwater runoff before it discharges into Topanga Canyon Creek.

# Viewridge Road Stormwater Improvements Project



 Project Location

Project Status

LATE 2024

Design  
Completion

MID 2025

Procurement

EARLY 2026

Construction  
Start

EARLY 2027

Construction  
End

## Our Commitment to the Community

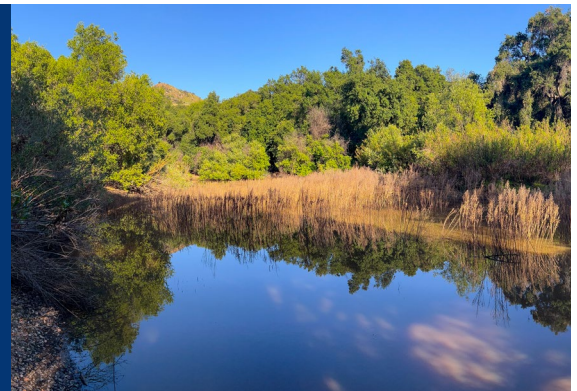
Every community is unique, and LA County values the input of the people who live near these important projects. We've collected input from Viewridge residents in a variety of ways, and developed the project to reflect feedback and community requests:

- ✓ Adjusted the tree height to reflect community preference for shorter trees that won't block the view of the Creek
- ✓ Designed the median with breaks to provide access and turnaround abilities for firefighting vehicles
- ✓ Selected all native plants
- ✓ Committed to fire safety, evacuation and avoidance precautions during construction

## Building Healthier Communities

The project is funded by the County General Fund, **Safe, Clean Water Program** and a **Prop 1 Integrated Regional Water Management (IRWM)** grant.

As part of the **Safe, Clean Water Program** and **LA County's Water Plan** goals, this project supports cleaner water and healthier communities by protecting local water bodies and improving water quality.



FOR MORE INFORMATION, PLEASE VISIT  
[dpw.lacounty.gov/wmd/stwq/Viewridge.aspx](http://dpw.lacounty.gov/wmd/stwq/Viewridge.aspx)

